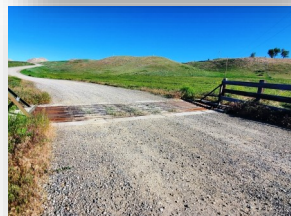
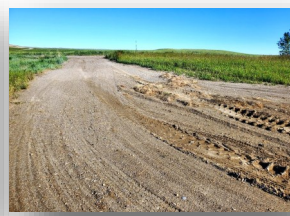
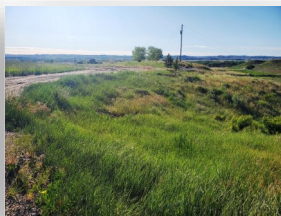


LOTS FOR SALE

Eagle Springs 20 Acre Tracts: Two 20 acre tracts located six miles south of Hardin, Montana. Fantastic views overlooking the Big Horn River Valley. Within a mile of the Two Leggins Fishing Access. Both tracts would make great home sites or a place for a cabin close to fishing access.

1260 Corporation Road | Hardin | MT | 59034



- ◆ Acres: 20 - (871,200 sq. ft.)
- ◆ Type: Residential or Recreational
- ◆ Taxes: \$94
- ◆ Electricity: Stubbed in
- ◆ Gas: No
- ◆ Sewer: Stubbed in
- ◆ Water: no
- ◆ Phone: Buyer to verify
- ◆ Mobiles, Manufactured, Modular home: Yes
- ◆ Topography: pasture, rolling
- ◆ Street Surface: gravel
- ◆ Only a mile from Two Leggins fishing access
- ◆ MLS #307190



SCOTT GROSSKOPF
406.861.4558

Landmark of Billings, Inc.

1925 Grand Avenue, Ste. 144
Billings, MT 59102
Office - 406.248.3101
Fax - 406.248.1633

E-mail:
Scott@MontanaRanches.com
Website:
MontanaRanches.com
MontanaProperty.com



\$69,000

SOLD

Information herein deemed reliable, however, is not guaranteed. The sale offering is made subject to errors, omissions, change of price and prior sale and withdrawal without notice in accordance with the law. This property is offered without respect to race, color, creed, national origin or familial status.