



LANDMARK
— REALTORS® —

LAND FOR SALE

TBD S 24th Road | Worden | MT | 59088



DICK GROSSKOPF
406.860.1512

Landmark Realtors

**1925 Grand Avenue,
Suite 144
Billings, MT 59102**

Phone: 406.248.3101

Fax: 406.248.1633

E-mail:

Dick@MontanaRanches.com

Sessions 40 is located in the Yellowstone Valley between Pompeys Pillar and Worden within the Huntley Project Irrigation District. Pompeys Pillar, the town, is five minutes east on Highway 312 and Worden is west on 312 or I-94 within ten minutes.

AREA FEATURES: Pompeys Pillar National Monument, Yellowstone River, BLM Public Land north of the Yellowstone River.

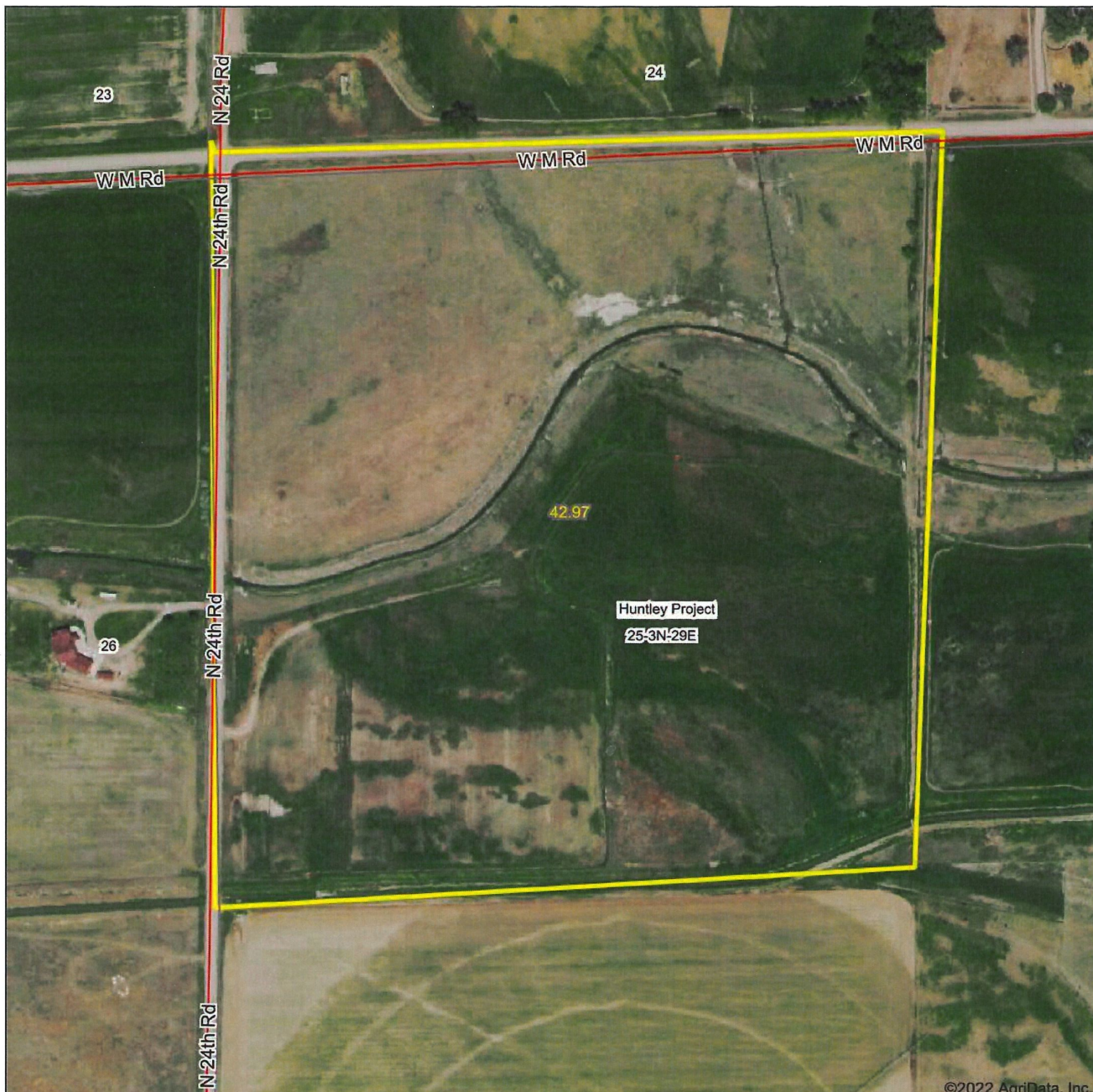
Half of the 40 acres is irrigated and is in permanent grass and alfalfa. There is a natural spring on the property that stays open and flowing year-round. There are no improvements on the property. Power and phone is available.

TAXES: To be broken out.

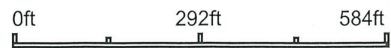
\$375,000

Information herein deemed reliable, however, is not guaranteed. The sale offering is made subject to errors, omissions, change of price and prior sale and withdrawal without notice in accordance with the law. This property is offered without respect to race, color, creed, national origin or familial status.

Aerial Map



Map Center: 45° 59' 10.39, -108° 3' 58.29



Maps Provided By:
surety
CUSTOMIZED ONLINE MAPPING
© AgriData, Inc. 2021 www.AgriDataInc.com

25-3N-29E
Yellowstone County
Montana

